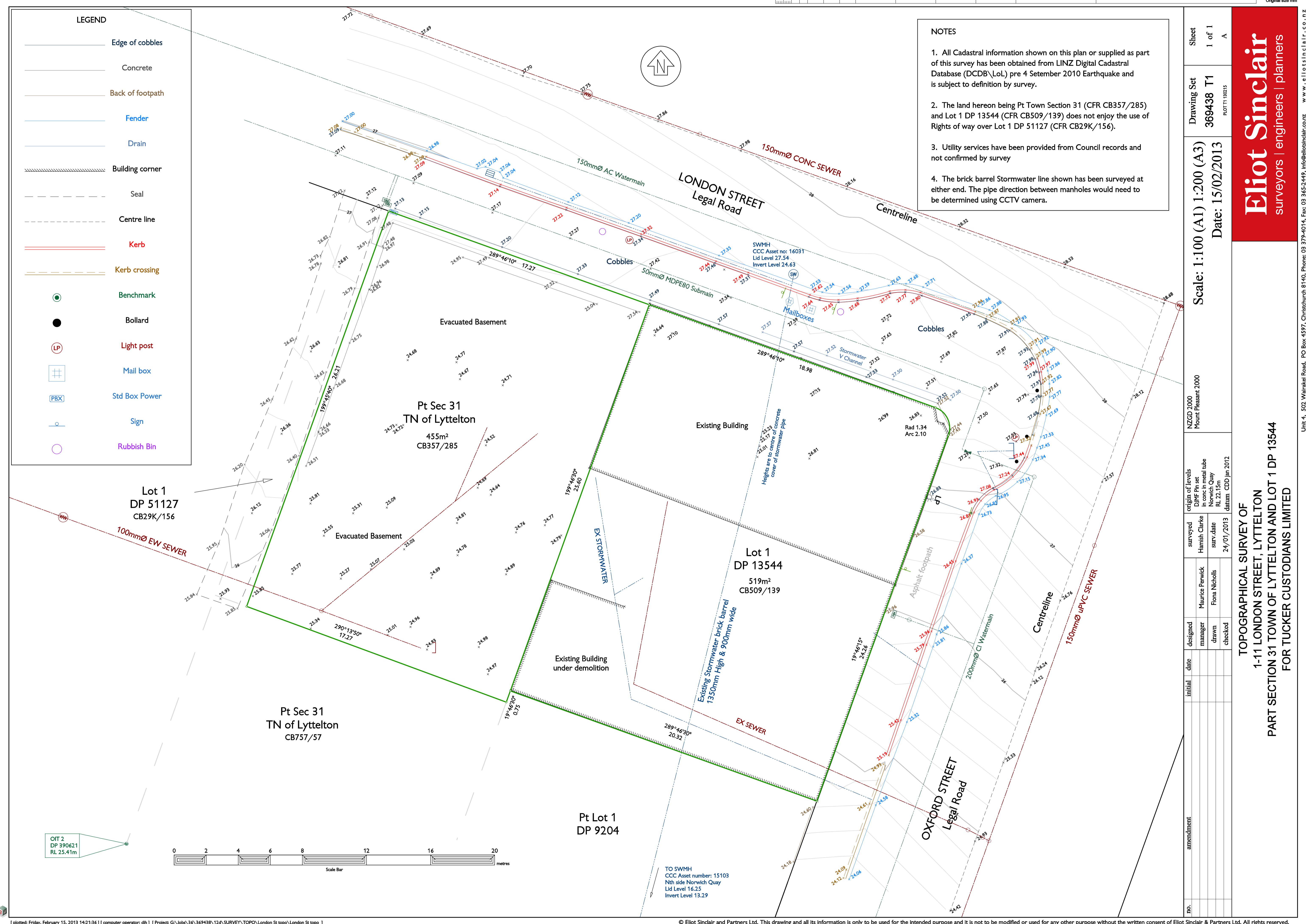


LEGEND

- Edge of cobbles
- Concrete
- Back of footpath
- Fender
- Drain
- Building corner
- Seal
- Centre line
- Kerb
- Kerb crossing
- Benchmark
- Bollard
- Light post
- Mail box
- Std Box Power
- Sign
- Rubbish Bin

NOTES

- All Cadastral information shown on this plan or supplied as part of this survey has been obtained from LINZ Digital Cadastral Database (DCDB\LoL) pre 4 September 2010 Earthquake and is subject to definition by survey.
- The land hereon being Pt Town Section 31 (CFR CB357/285) and Lot 1 DP 13544 (CFR CB509/139) does not enjoy the use of Rights of way over Lot 1 DP 51127 (CFR CB29K/156).
- Utility services have been provided from Council records and not confirmed by survey
- The brick barrel Stormwater line shown has been surveyed at either end. The pipe direction between manholes would need to be determined using CCTV camera.



Sheet	1 of 1
Drawing Set	369438 T1
Scale:	1:100 (A1) 1:200 (A3)
Date:	15/02/2013
NZGD 2000	Mount Pleasant 2000
origin of levels	DHR Fin set in conc in metal tube
surveyed	Hamish Clarke
designed	Maurice Perwick
initial	
date	
drawn	Fiona Nicholls
checked	
surv. date	24/01/2013
datum	CDD Jan 2012

Eliot Sinclair
 surveyors | engineers | planners

TOPOGRAPHICAL SURVEY OF
 1-11 LONDON STREET, LYTTELTON
 PART SECTION 31 TOWN OF LYTTELTON AND LOT 1 DP 13544
 FOR TUCKER CUSTODIANS LIMITED

Unit 4, 502 Wairakei Road, PO Box 4597, Christchurch 8140, Phone: 03 379-4014, Fax: 03 365-2449, info@eliotclair.com, www.eliotclair.com